

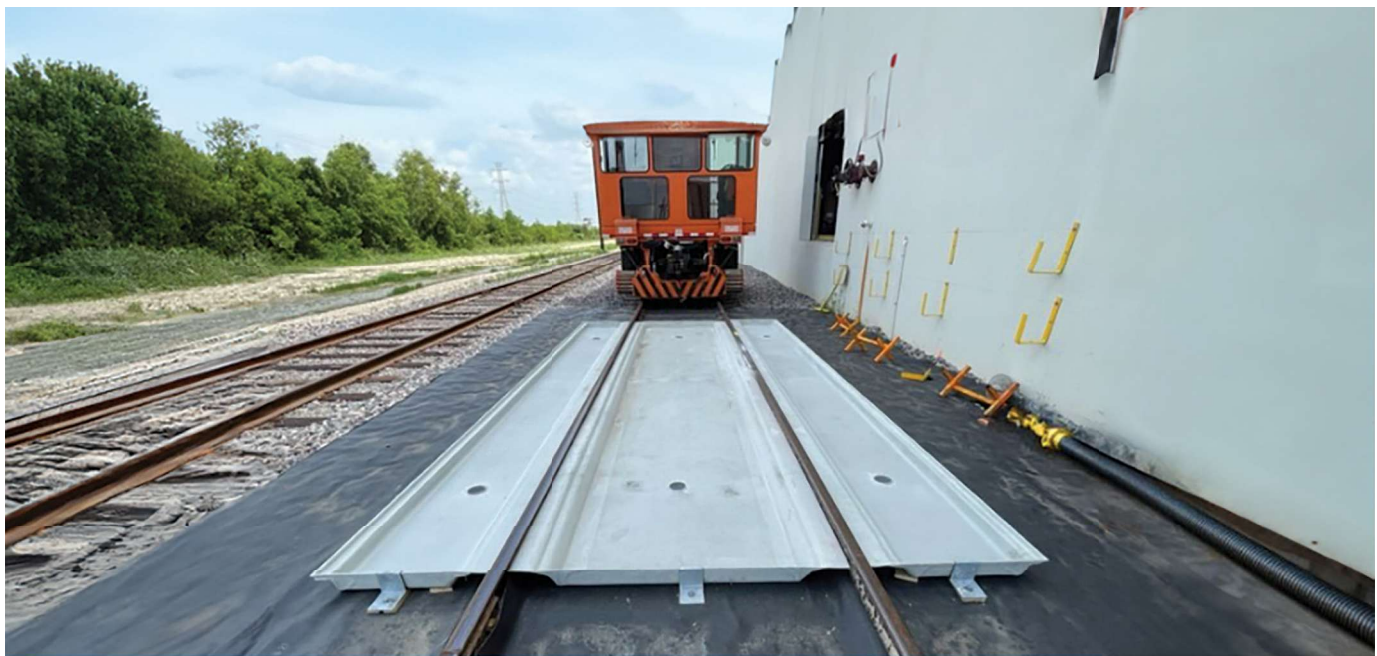
STINGER RAIL TRACK BERM



48-RSB-FS	
Dimensions	6 ft. x 4 ft. x 1 ft. (1.8 m. x 1.2 m. x 0.3 m.)
Weight	38 lbs. (17.2 kg.)
Spill Capacity*	120 gal. (454.2 L.)
Regulations: EPA 40 CFR 264.175, SPCC, NPDES	

TRACK PANS

PART NUMBER	DESCRIPTION	DIMENSIONS LxWxH FT. (M.)	WEIGHT LB. (KG.)	SPILL CAPACITY* GAL. (L.)
ENP 500FS	20' Full System (1 Center Pan, 2 Out Pans)	See below	400 (181.4)	See below
ENP 500CP20	20' Center Pan	20 x 4.7 x 4 in. (6 x 1.4 x 10 cm.)	182 (82.6)	220 (832.8)
ENP 500OR20	20' Outrigger Pan	20 x 2.5 x 4 in. (6 x 0.7 x 10 cm.)	90 (40.8)	125 (473.2)



This full system is designed to contain spills, small or large, and prevent leakage into the ground without disrupting normal railcar operations.